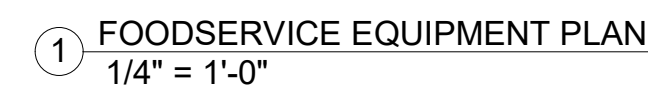


DISCIPLINE

ISSUE FOR PROPOSAL
BUILDING NUMBER

K1

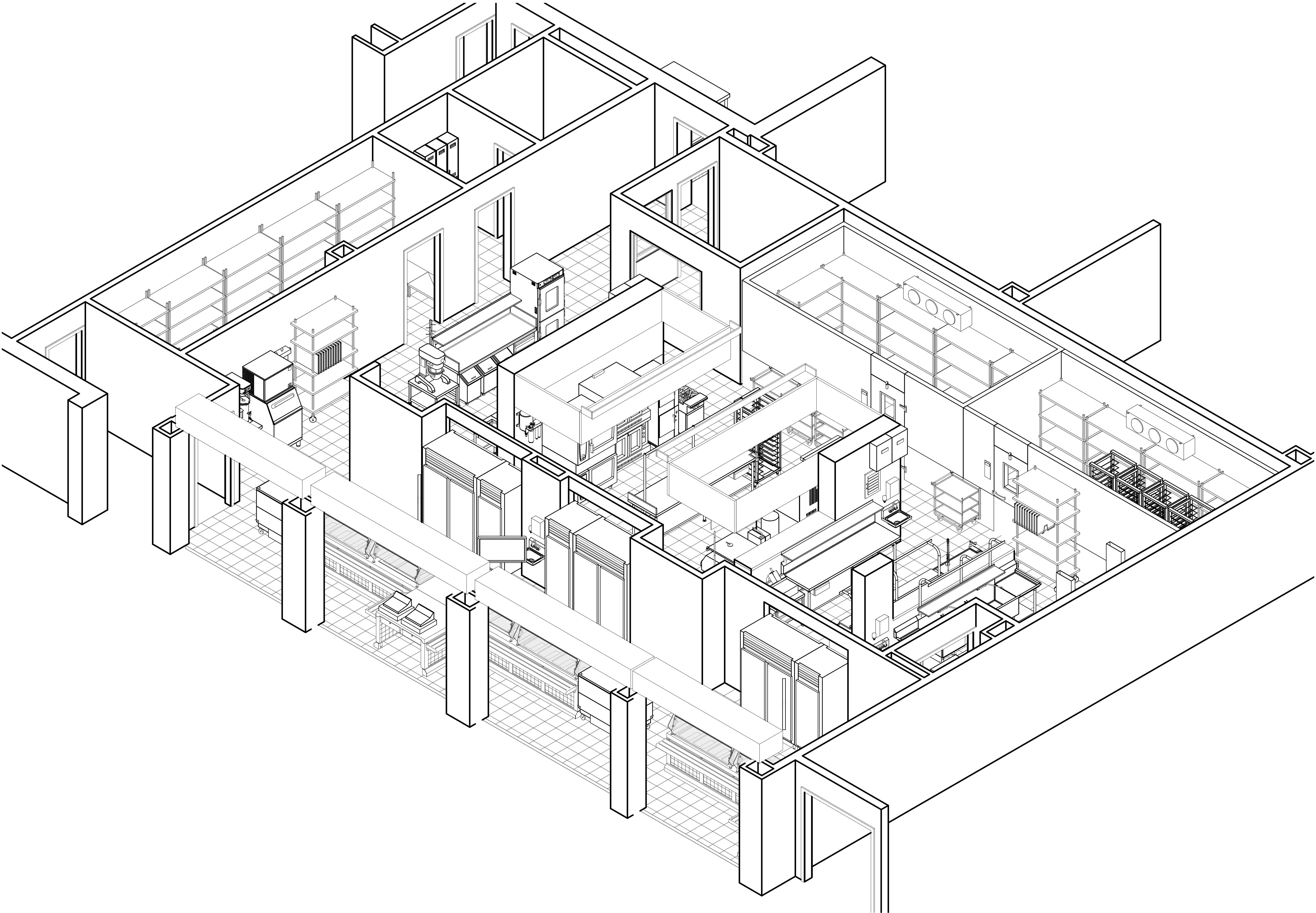


THIS SCHEDULED EQUIPMENT IS PART OF THE EARLY EQUIPMENT PROCUREMENT PACKAGE. PRICING PROVIDED SHALL MATCH OR EXCEED THE SCHEDULED VALUES OF ALL THE EQUIPMENT LISTED.

FOODSERVICE EQUIPMENT INDICATED IN THE ABOVE EQUIPMENT SCHEDULE SHALL BE OWNER FURNISHED/CONTRACTOR INSTALLED.

FULL AND COMPLETE EQUIPMENT PRODUCT SUBMITTALS ARE DUE AT THE TIME OF PRICING SUBMISSION FOR THIS EARLY PROCUREMENT PACKAGE. ANY PRICING PROVIDED THAT DOES NOT HAVE AN ACCOMPANYING COMPLIANT EQUIPMENT SUBMITTAL WILL NOT BE ACCEPTED. REFER TO 11 40 00 GENERAL SPECIFICATIONS, 1.9 FOR SUBMITTAL REQUIREMENTS.

ISOMETRIC VIEWS WITHIN THIS DRAWING ARE NOT TO SCALE AND ARE PROVIDED FOR REFERENCE PURPOSES ONLY. ISOMETRIC VIEWS ARE NOT INTENDED FOR REGULATORY APPROVAL, PERMITTING, NOR CONSTRUCTION. REFER TO FLOOR PLANS AND DETAILS FOR SPECIFIC PROJECT INFORMATION.



1 FS FACILITY MODEL

ARCHITECT

HOUSTON
11 Greenway Plaza, 22nd Floor
Houston, TX 77046
713-965-0808 P
713-961-4571 F
TX Firm BR 1608

PKB Architects, Inc.
PKB.com

OWNER

HOUSTON
11 Greenway Plaza, 22nd Floor
Houston, TX 77046
713-965-0808 P
713-961-4571 F
TX Firm BR 1608

DESIGNER

HOUSTON
11 Greenway Plaza, 22nd Floor
Houston, TX 77046
713-965-0808 P
713-961-4571 F
TX Firm BR 1608

ENGINEER

HOUSTON
11 Greenway Plaza, 22nd Floor
Houston, TX 77046
713-965-0808 P
713-961-4571 F
TX Firm BR 1608

LANDSCAPE

HOUSTON
11 Greenway Plaza, 22nd Floor
Houston, TX 77046
713-965-0808 P
713-961-4571 F
TX Firm BR 1608

MECHANICAL

HOUSTON
11 Greenway Plaza, 22nd Floor
Houston, TX 77046
713-965-0808 P
713-961-4571 F
TX Firm BR 1608

ELECTRICAL

HOUSTON
11 Greenway Plaza, 22nd Floor
Houston, TX 77046
713-965-0808 P
713-961-4571 F
TX Firm BR 1608

PLUMBING

HOUSTON
11 Greenway Plaza, 22nd Floor
Houston, TX 77046
713-965-0808 P
713-961-4571 F
TX Firm BR 1608

LEARNERS

HOUSTON
11 Greenway Plaza, 22nd Floor
Houston, TX 77046
713-965-0808 P
713-961-4571 F
TX Firm BR 1608

FOOD SERVICE

HOUSTON
11 Greenway Plaza, 22nd Floor
Houston, TX 77046
713-965-0808 P
713-961-4571 F
TX Firm BR 1608

FOODSERVICE DESIGN PROFESSIONALS

HOUSTON
11 Greenway Plaza, 22nd Floor
Houston, TX 77046
713-965-0808 P
713-961-4571 F
TX Firm BR 1608

TOMBALL WEST ELEMENTARY SCHOOL

JURGEN RD
TOMBALL, TX

ISSUE FOR PROPOSAL

TOMBALL

INDEPENDENT SCHOOL DISTRICT

C B D

E A

H G F

KEY PLAN

NORTH: PLAN TRUE

DISCIPLINE

CLIENT
TOMBALL ISD

DATE
02/27/2023

PROJECT NUMBER
220137

DRAWING HISTORY

No.	Description	Date

ISSUE FOR PROPOSAL

BUILDING NUMBER

FS FACILITY MODEL

FCS

FOODSERVICE CONSULTANTS

MELISSA MOORE

48854119

SOCIETY INTERNATIONAL

PROFESSIONAL MEMBER

FDP

K1.1

ISOMETRIC VIEWS WITHIN THIS DRAWING ARE NOT TO SCALE AND ARE PROVIDED FOR REFERENCE PURPOSES ONLY. ISOMETRIC VIEWS ARE NOT INTENDED FOR REGULATORY APPROVAL, PERMITTING, NOR CONSTRUCTION. REFER TO FLOOR PLANS AND DETAILS FOR SPECIFIC PROJECT INFORMATION.



1 FS EQUIPMENT MODEL



ARCHITECT

HOUSTON
11 Greenway Plaza, 22nd Floor
Houston, TX 77046
713-965-0808 P
713-961-4571 F
TX Firm BR 1608

PKB Architects, Inc.
PKB.com

OWNER

TOMBALL ISD
11111 Greenway Plaza, Suite 2200
Houston, TX 77046
713-965-0808 P
713-961-4571 F
TX Firm BR 1608

DESIGNER

11111 Greenway Plaza, Suite 2200
Houston, TX 77046
713-965-0808 P
713-961-4571 F
TX Firm BR 1608

ENGINEER

11111 Greenway Plaza, Suite 2200
Houston, TX 77046
713-965-0808 P
713-961-4571 F
TX Firm BR 1608

LANDSCAPE

11111 Greenway Plaza, Suite 2200
Houston, TX 77046
713-965-0808 P
713-961-4571 F
TX Firm BR 1608

MECHANICAL

11111 Greenway Plaza, Suite 2200
Houston, TX 77046
713-965-0808 P
713-961-4571 F
TX Firm BR 1608

ELECTRICAL

11111 Greenway Plaza, Suite 2200
Houston, TX 77046
713-965-0808 P
713-961-4571 F
TX Firm BR 1608

PLUMBING

11111 Greenway Plaza, Suite 2200
Houston, TX 77046
713-965-0808 P
713-961-4571 F
TX Firm BR 1608

TELEPHONE

11111 Greenway Plaza, Suite 2200
Houston, TX 77046
713-965-0808 P
713-961-4571 F
TX Firm BR 1608

VIDEO

11111 Greenway Plaza, Suite 2200
Houston, TX 77046
713-965-0808 P
713-961-4571 F
TX Firm BR 1608

FOODSERVICE

11111 Greenway Plaza, Suite 2200
Houston, TX 77046
713-965-0808 P
713-961-4571 F
TX Firm BR 1608

FOODSERVICE DESIGN PROFESSIONALS

11111 Greenway Plaza, Suite 2200
Houston, TX 77046
713-965-0808 P
713-961-4571 F
TX Firm BR 1608

TOMBALL WEST ELEMENTARY SCHOOL

JURGEN RD
TOMBALL, TX

ISSUE FOR PROPOSAL

TOMBALL

INDEPENDENT SCHOOL DISTRICT

C B D

E A

H G F

KEY PLAN

NORTH: PLAN TRUE

DISCIPLINE

CLIENT
TOMBALL ISD

DATE
02/27/2023

PROJECT NUMBER
220137

DRAWING HISTORY

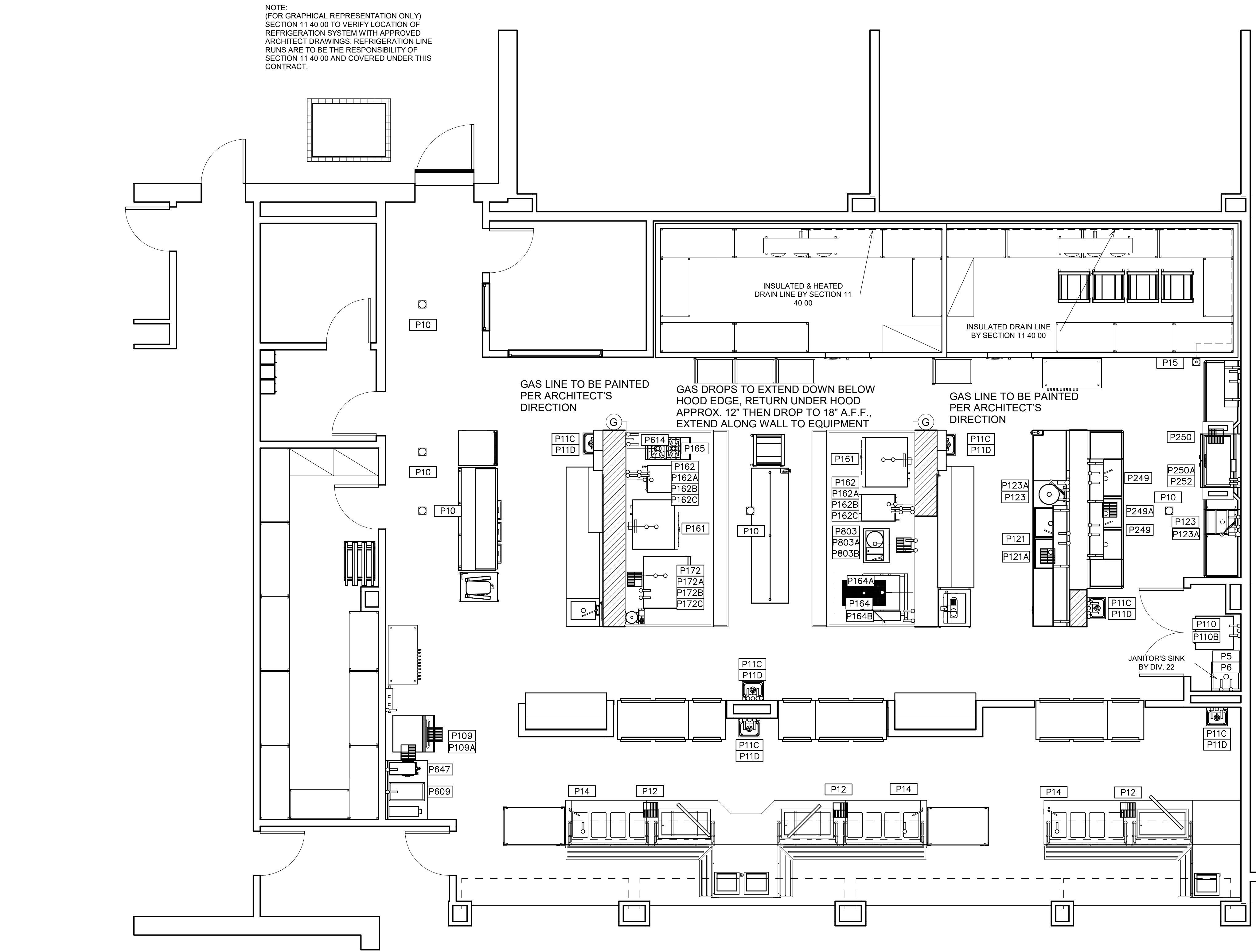
No. Description Date

ISSUE FOR PROPOSAL

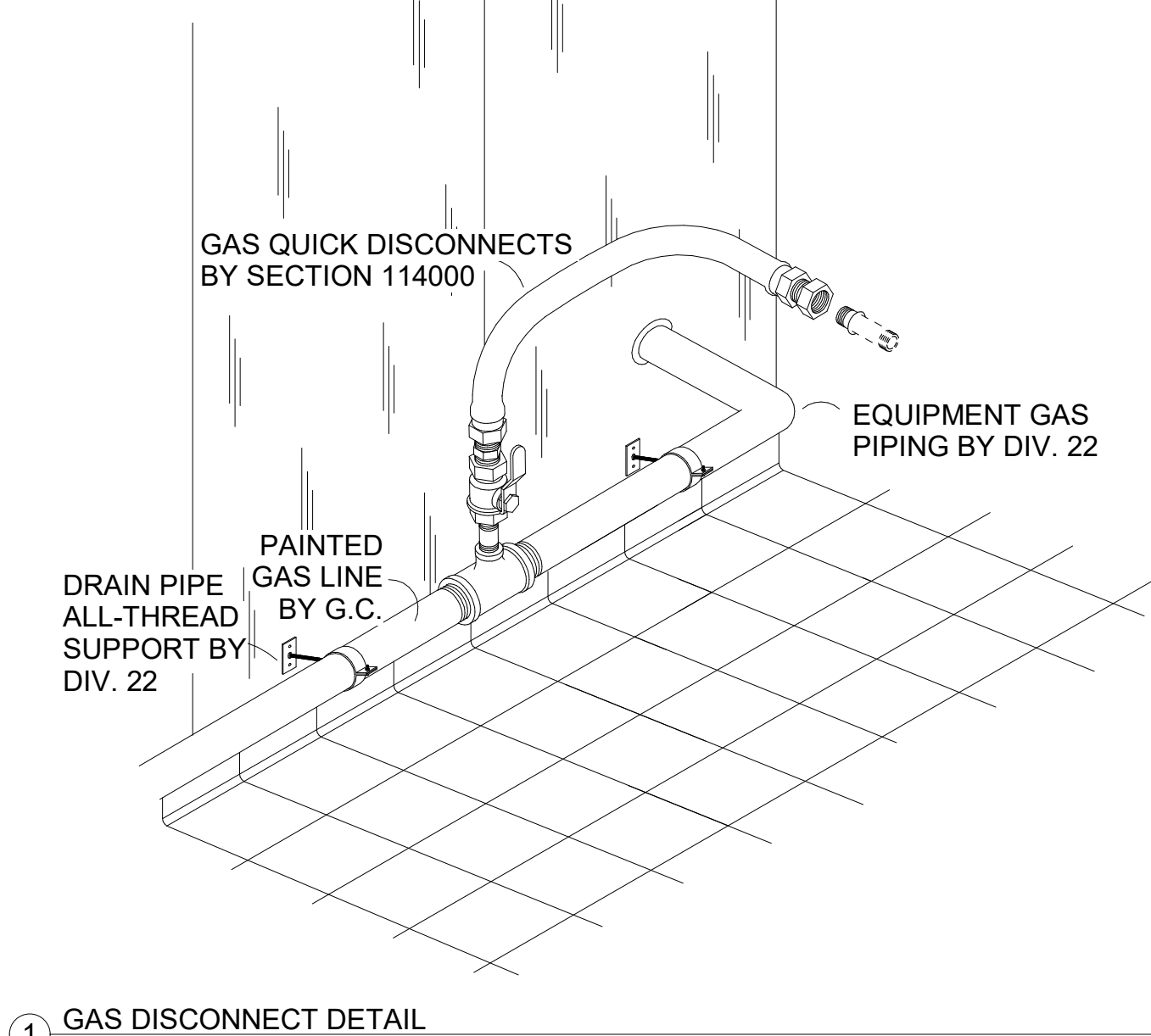
BUILDING NUMBER

FS EQUIPMENT MODEL

K1.2

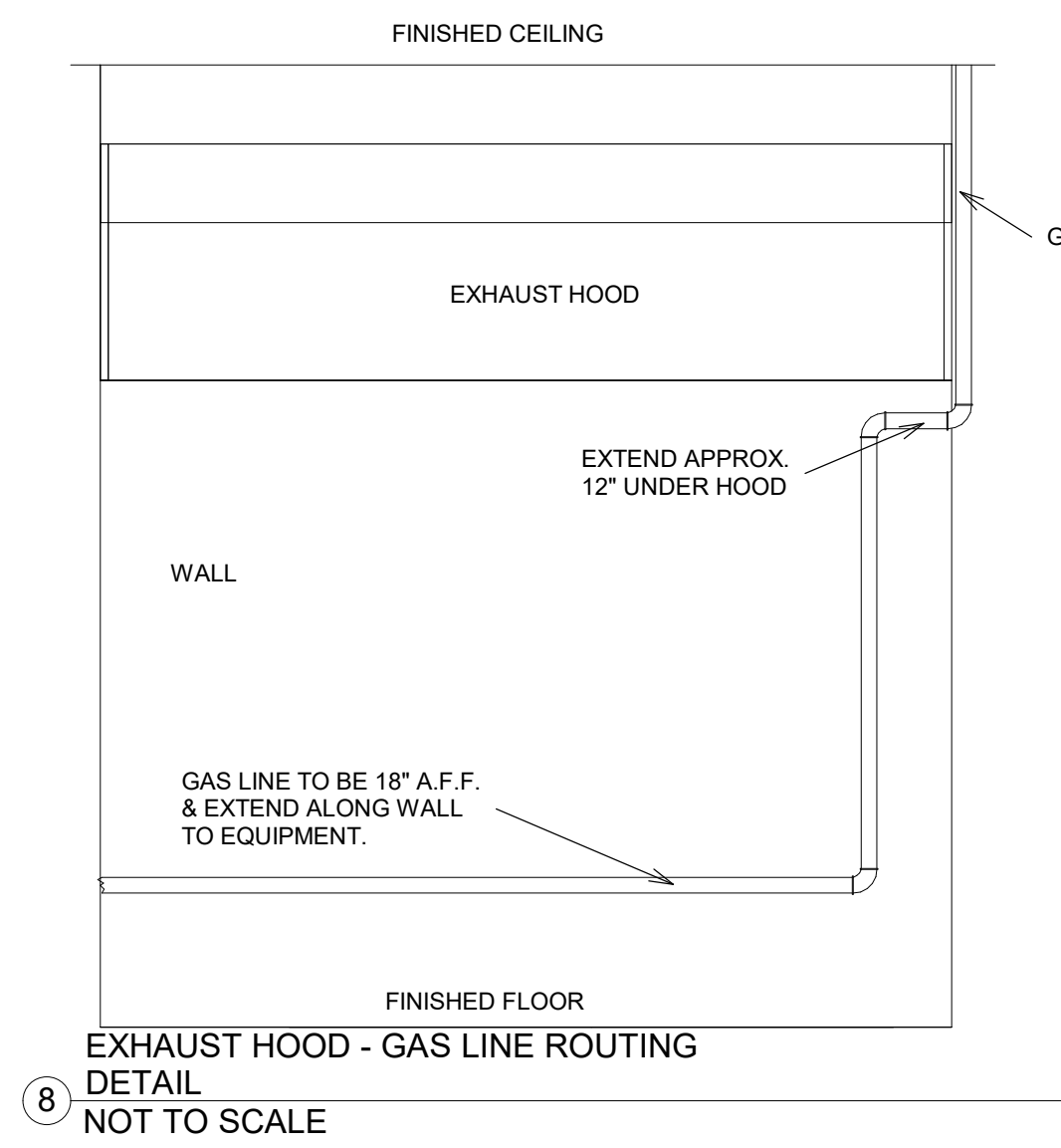


9 FOODSERVICE PLUMBING PLAN
1/4" = 1'-0"



1 GAS DISCONNECT DETAIL
NOT TO SCALE

6 DRAIN PIPING FASTENER DETAIL
NOT TO SCALE



8 EXHAUST HOOD - GAS LINE ROUTING
DETAIL
NOT TO SCALE

I	HW	HOT WATER	W	INDIRECT WASTE (EXTEND TO F.D.)
I	CW	COLD WATER	D	FUNNEL FLOOR DRAIN
HTW	180 F HOT WATER	EVC	EXHAUST VENT CONNECTION	
CWS	CHILLED WATER	SVC	SUPPLY VENT CONNECTION	
G	GAS SUPPLY	FR	DIRECT-CONNECTED FLUE RISER	
SS	STEAM SUPPLY	PS	PIPE SLEEVE	
CR	CONDENSATE RETURN	AFF	ABOVE FINISHED FLOOR	
DR	DRAIN	ST	STUB UP/ST	
FD	FLOOR DRAIN	BTIC	BRANCH TO CONN. ON EQUIP	
FS	FLOOR SINK	DFA	DROP FROM ABOVE	

4 PLUMBING SYMBOLS
NOT TO SCALE

- DO NOT ROUGH-IN FROM THIS DRAWING. REFER TO THE FOODSERVICE EQUIPMENT SUPPLIER'S DIMENSIONED SHOP DRAWINGS.
- DIMENSIONS INDICATED ARE TO BE VERIFIED BY FOODSERVICE EQUIPMENT SUPPLIER AND ADJUSTED AS REQUIRED BY EQUIPMENT AND/OR FIELD CONDITIONS.
- ACCESSORIES PROVIDED LOOSE WITH FOODSERVICE EQUIPMENT BY SECTION 11 40 00 TO BE FIELD INSTALLED BY DIVISION 22.
- DRAINAGE AND PIPING SYSTEMS TO BE CLEANED PRIOR TO FINAL CONNECTION WITH FOODSERVICE EQUIPMENT.
- HAND LAVATORY PROVIDED AND INSTALLED BY DIVISION 22. DIV. 22 TO PROVIDE HOT WATER TEMPERING VALVE, IF REQ'D.
- JANITOR SINK/FAUCET PROVIDED AND INSTALLED BY DIVISION 22.
- INTERCONNECTION OF 1/2" CW TO PRE-RINSE AND DISPOSER'S CONE/BODY INLETS PIPED THRU SOLENOID AND VACUUM BREAKER BY DIVISION 22.
- ENGINEER TO VERIFY W/LOCAL CODE TO BYPASS OR PIPE THRU GREASE TRAP AND/OR INTERCEPTOR.
- 6" W.C. AT EQUIPMENT. MECHANICAL GAS SHUT-OFF VALVE BY SECTION 11 40 00. FINAL CONNECTION TO EQUIPMENT AND INSTALLATION OF MECHANICAL GAS VALVE BY DIVISION 22.

3 PLUMBING GENERAL NOTES
NOT TO SCALE

FOODSERVICE PLUMBING SCHEDULE						
FDP PNO	FDP PSIZE	FDP PCONN	FDP PSERVICE TO	FDP PLOC	FDP PAFF	FDP PREMARKS
P5	3/4"	H & C WATER	JANITOR SINK	WALL	48"	JANITOR SINK BY DIV. 22
P6	4"	HUB DRAIN	JANITOR SINK	FLOOR	VERIFY	JANITOR SINK BY DIV. 22
P10	VERIFY	FLOOR DRAIN	GENERAL AREA DRAIN	FLOOR	VERIFY	---
P11C	1/2"	H & C WATER	FAUCET	WALL	18"	FURNISHED & INSTALLED BY DIV. 22
P11D	1 1/2"	DIRECT DRAIN	HAND SINK	WALL	15"	FURNISHED & INSTALLED BY DIV. 22
P12	12"SQ.	FLOOR SINK	EQUIPMENT	FLOOR	0"	3/4 GRATE - RE: NOTE #4
P14	1/2"	COLD WATER	FILL FAUCET	FLOOR	6"	BTIC; RE: NOTE #3 - S/S FLEX HOSE TO FILL FAUCET
P15	4"	FLOOR DRAIN	FUNNEL FLOOR DRAIN	FLOOR	0"	---
P109	3/4"	COLD WATER	WATER FILTER / ICE	WALL	60"	BTIC; RE: NOTE #3 & #17
P109A	(2) 12"SQ.	FLOOR SINKS	ICE MACHINE	FLOOR	0"	FULL & 3/4 GRATE - RE: NOTE #4
P110	3/4"	H & C WATER	CLOTHES WASHER	WALL	48"	BTIC; VALVE BOX
P110B	2"	INDIRECT DRAIN	CLOTHES WASHER	WALL	48"	VALVE BOX
P121	3/4"	H & C WATER	FAUCET	WALL	13"	BTIC; RE: NOTE #3
P121A	12" SQ.	FLOOR SINK	SINK	FLOOR	0"	3/4 GRATE - RE: NOTE #4
P123	3/4"	H & C WATER	FAUCET / DISPOSER	WALL	13"	BTIC; RE: NOTE #3 & #7
P123A	2"	DIRECT DRAIN	DISPOSER	WALL	10"	BTIC; RE: NOTE #3 & #8
P161	(2)3/4"	NATURAL GAS	CONVECTION OVEN	WALL	18"/36"	BTIC; RE: NOTE #3 & #9 - 60 MBTU/HR EACH
P162	12"SQ.	FLOOR SINK	CONVECTION STEAMER	FLOOR	0"	3/4 GRATE - RE: NOTE #4
P162A	(2) 3/4"	COLD WATER	CONVECTION STEAMER	WALL	18"/48"	BTIC; RE: NOTE #3 & #16 & #17 - INTERCONNECT THRU WATER FILTER
P162B	(2) 3/4"	COLD WATER	CONVECTION STEAMER	WALL	15"/45"	BTIC; RE: NOTE #3
P162C	(2) 3/4"	NATURAL GAS	CONVECTION STEAMER	WALL	24" / 60"	BTIC; RE: NOTE #3 & #9 62 MBTU/HR EA.
P164	4"	HUB DRAIN	TRENCH LINER	FLOOR	-9"	BTIC; RE: NOTE #3 - CRITICAL LOCATION
P164A	3/4"	NATURAL GAS	TILT BRAISING PAN	WALL	18"	BTIC; RE: NOTE #3 & #9 - 144 MBTU/HR
P164B	3/4"	H & C WATER	TILT BRAISING PAN	WALL	36"	BTIC; RE: NOTE #3
P165	1"	NATURAL GAS	RANGE	WALL	18"	BTIC; RE: NOTE #3 & #9 - 70 MBTU/HR
P172	(2)3/4"	COLD WATER	COMBI OVEN	WALL	24"/48"	BTIC; RE: NOTE #3, #16 & #17 - INTERCONNECT THRU FILTERS
P172A	(2)3/4"	COLD WATER	COMBI OVEN	WALL	24"/48"	BTIC; RE: NOTE #3
P172B	12"SQ.	FLOOR SINK	EQUIPMENT	FLOOR	0"	3/4 GRATE - RE: NOTE #4
P172C	(2)3/4"	NATURAL GAS	COMBI OVEN	WALL	18"/36"	BTIC; RE: NOTE #3 - 98/96 MBTU/HR EACH
P249	3/4"	H & C WATER	FAUCET	WALL	13"	BTIC; RE: NOTE #3
P249A	12" SQ.	FLOOR SINK	SINK	FLOOR	0"	THREE QUARTER GRATE
P250	12" SQ.	FLOOR SINK	BOOSTER / DISHMACHINE	FLOOR	0"	BTIC; RE: NOTE #4
P250A	3/4"	COLD WATER	DRAIN TEMPERING	WALL	18"	RE: NOTE #3
P252	3/4"	HOT WATER	INTERNAL BOOSTER HEATER	WALL	18"	EXT. THRU W.FILTER TO BOOSTER / DISH MACHINE - 140DEG.MIN.
P609	3/4"	COLD WATER	ICE MAKER	WALL	13"	BTIC; RE: NOTE #3
P614	3/4"	H & C WATER	FILL FAUCET	WALL	42"	BTIC; RE: NOTE #3
P647	3/4"	COLD WATER	COFFEE/TEA BREWER	WALL	13"	BTIC; RE: NOTE #3
P803	12"SQ.	FLOOR SINK	TRUNNION KETTLE	FLOOR	0"	3/4 GRATE - RE: NOTE #4
P803A	3/4"	H & C WATER	TRUNNION KETTLE	WALL	18"	BTIC; RE: NOTE #3
P803B	3/4"	NATURAL GAS	TRUNNION KETTLE	WALL	18"	BTIC; RE: NOTE #3 - 53 MBTU/HR

SECTION 11 40 00 TO PROVIDE LOOSE WITH FOODSERVICE EQUIPMENT. INSTALLATION BY DIV. 22 & 26.

- A VACUUM BREAKER
- B DISPOSER
- C TIME DELAY
- D CONTROL PANEL
- E SOLENOID VALVE

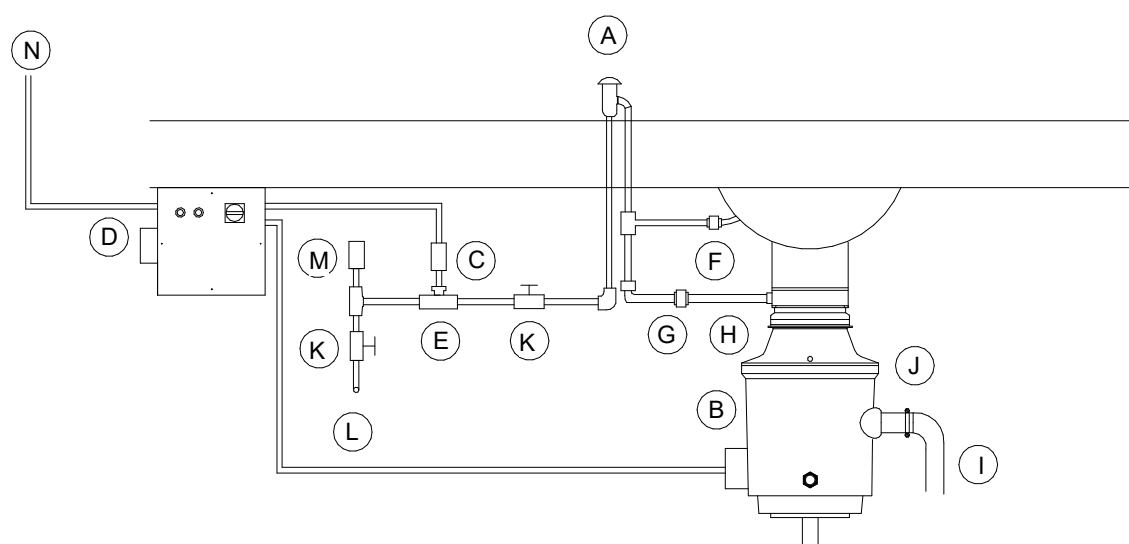
DIVISION 22 TO PROVIDE AND INSTALL

- F 1/2" CW INLET
- G FLOW CONTROL
- H 1/2" CW
- I 2" DRAIN LINE
- J 1-1/2" TAILPIECE
- K GATE VALVE
- L 1/2" CW SUPPLY
- M SHOCK STOP

DIVISION 26 TO PROVIDE AND INSTALL

- N POWER SUPPLY

7 DISPOSER DETAIL
NOT TO SCALE



NOTE: WATER AND DRAIN CONNECTIONS INDICATED ARE THOSE REQUIRED FOR THE FOODSERVICE EQUIPMENT AND THOSE REQUIRED FOR SUPPORT EQUIPMENT FURNISHED BY DIVISION 22. FOR ADDITIONAL WATER AND DRAIN REQUIREMENTS REFER TO MECHANICAL DRAWINGS.

NOTE: REFER TO ELECTRICAL/MECHANICAL DRAWINGS FOR REQUIREMENTS OF EXHAUST FANS AND MAKE-UP AIR HANDLERS AND LOCATION OF AN INTERLOCK AND START/STOP CONTROLS TO BE LOCATED WITHIN FOODSERVICE AREA BY DIVISION 26.

5 PLUMBING COORDINATION NOTES
NOT TO SCALE

- ALL EXHAUST HOOD CONNECTIONS FURNISHED AND INSTALLED BY DIVISION 23. ALL EXHAUST HOOD CONDENSATE DRAIN CONNECTIONS FURNISHED AND INSTALLED BY DIVISION 22.
- ALL EXPOSED FIRE SYSTEM PIPING TO BE CHROME PLATED OR STAINLESS STEEL.
- NUMBER NOT USED.
- ALL PIPING WITHIN COUNTER BODY OR UNDER FABRICATED COUNTERS TO BE RUN TO A CONNECTION POINT BELOW COUNTER BODY BY SECTION 11 40 00. FINAL CONNECTION BY DIVISION 22.
- NUMBER NOT USED.
- QUICK DISCONNECTS TO BE SUPPLIED BY SECTION 11 40 00 W/ALL GAS & WATER EQUIPMENT.
- PROTECTIVE DEVICES TO PROTECT AGAINST BACK FLOW. BACK SYPHONAGE SHALL BE INSTALLED AT ALL FIXTURES AND EQUIPMENT WHERE BACKFLOW AND/OR BACKSYPHONAGE MAY OCCUR AND WHERE A MINIMUM AIR GAP CANNOT BE PROVIDED BETWEEN THE WATER TO THE FIXTURE OR EQUIPMENT AND ITS FLOODLEVEL RIM. TO BE PROVIDED AND INSTALLED BY DIVISION 22. VACUUM BREAKERS, WHEN FURNISHED WITH EQUIPMENT, SHALL OVERRIDE ABOVE, IF ACCEPTABLE WITH APPLICABLE CODES, BUT DIV. 22 TO PIPE WHEN NOT PREPARED BY FACTORY. INTERCONNECT THRU WATER FILTER TO EQUIPMENT BY DIVISION 22.
- BACKFLOW PREVENTION BY DIVISION 22.



ARCHITECT
HOUSTON
11 Greenway Plaza, 22nd Floor
Houston, TX 77046
713-965-0808 P
713-961-4571 F
TX Firm: BR 1608

PKB Architects, Inc.
PKB.com

DISCIPLINE
TOMBALL ISD

DATE
02/21/2023

PROJECT NUMBER
220137

DRAWING HISTORY

No.	Description	Date

ISSUE FOR PROPOSAL

BUILDING NUMBER

FS PLUMBING PLAN

K1.4



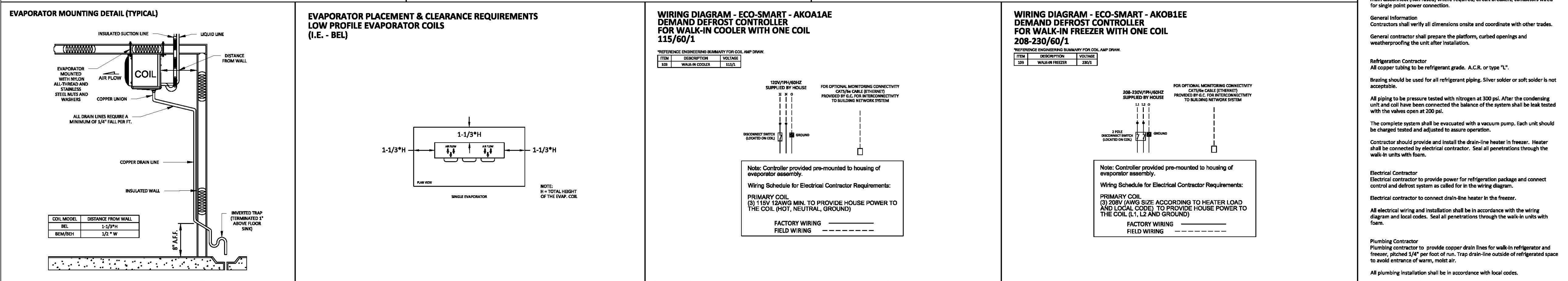
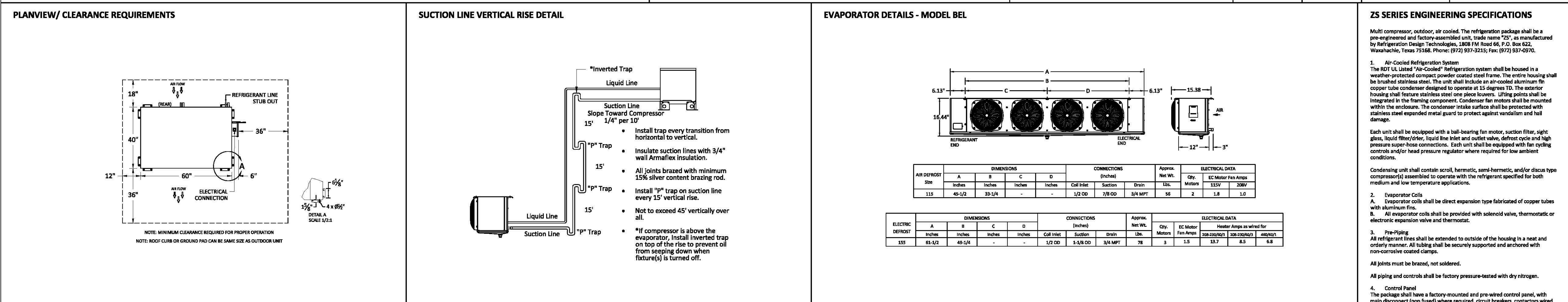
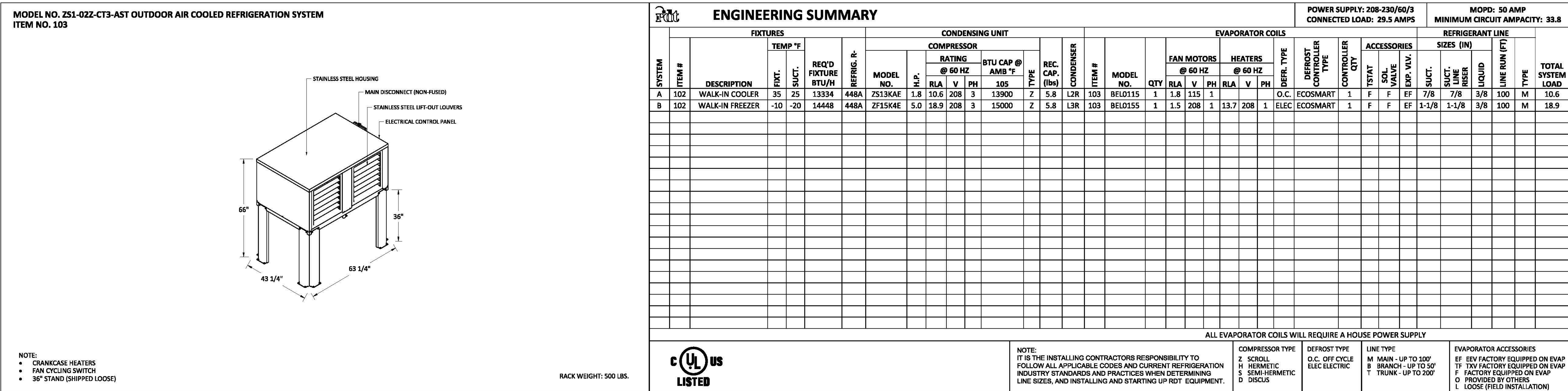
NOTE: ELECTRICAL CONNECTIONS INDICATED ARE THOSE REQUIRED FOR THE FOODSERVICE EQUIPMENT AND THOSE REQUIRED FOR SUPPORT EQUIPMENT FURNISHED BY DIVISION 26. FOR ADDITIONAL REQUIREMENTS REFER TO ELECTRICAL ENGINEER'S DRAWINGS.

4 ELECTRICAL COORDINATION NOTES
NOT TO SCALE

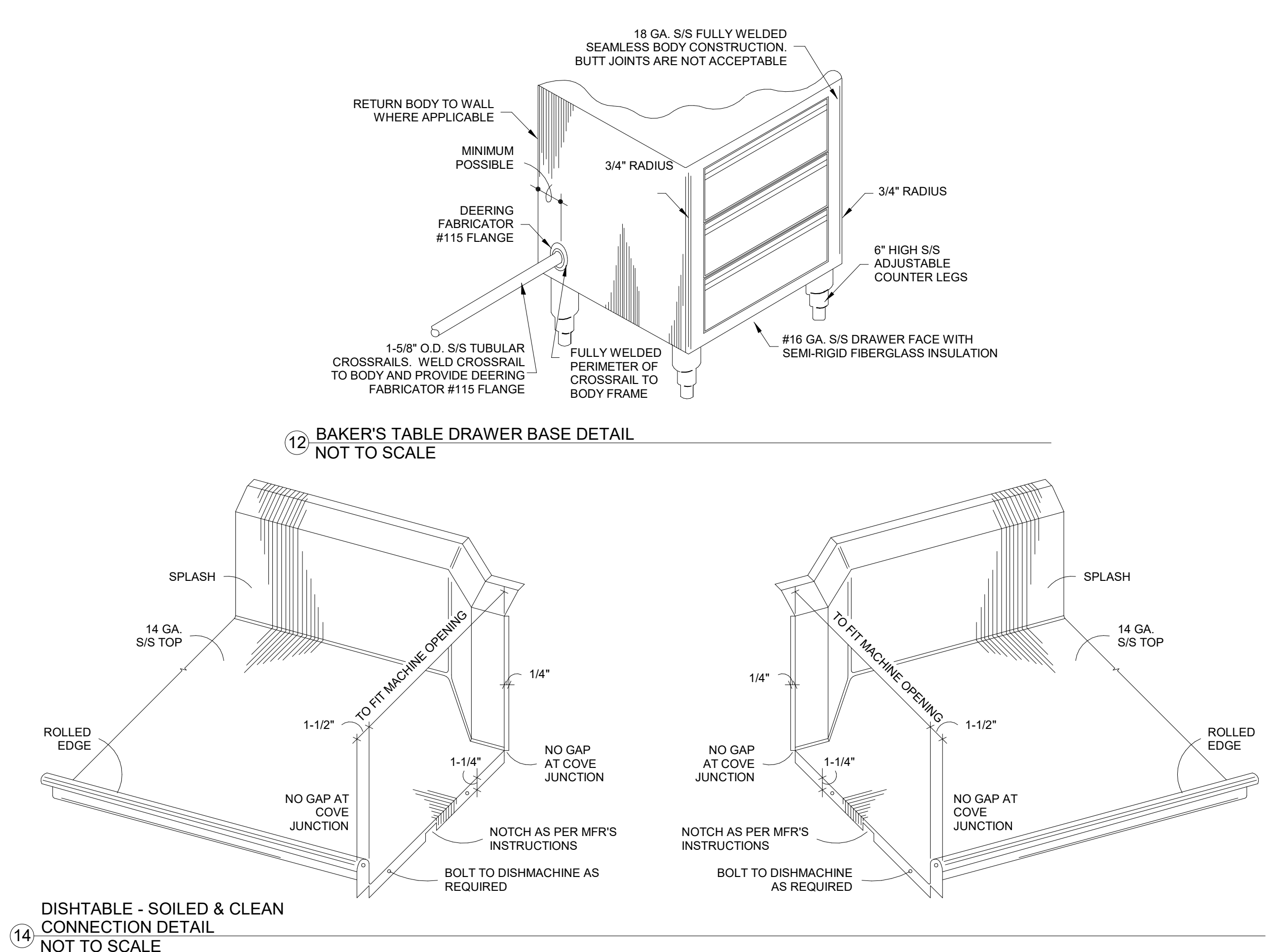
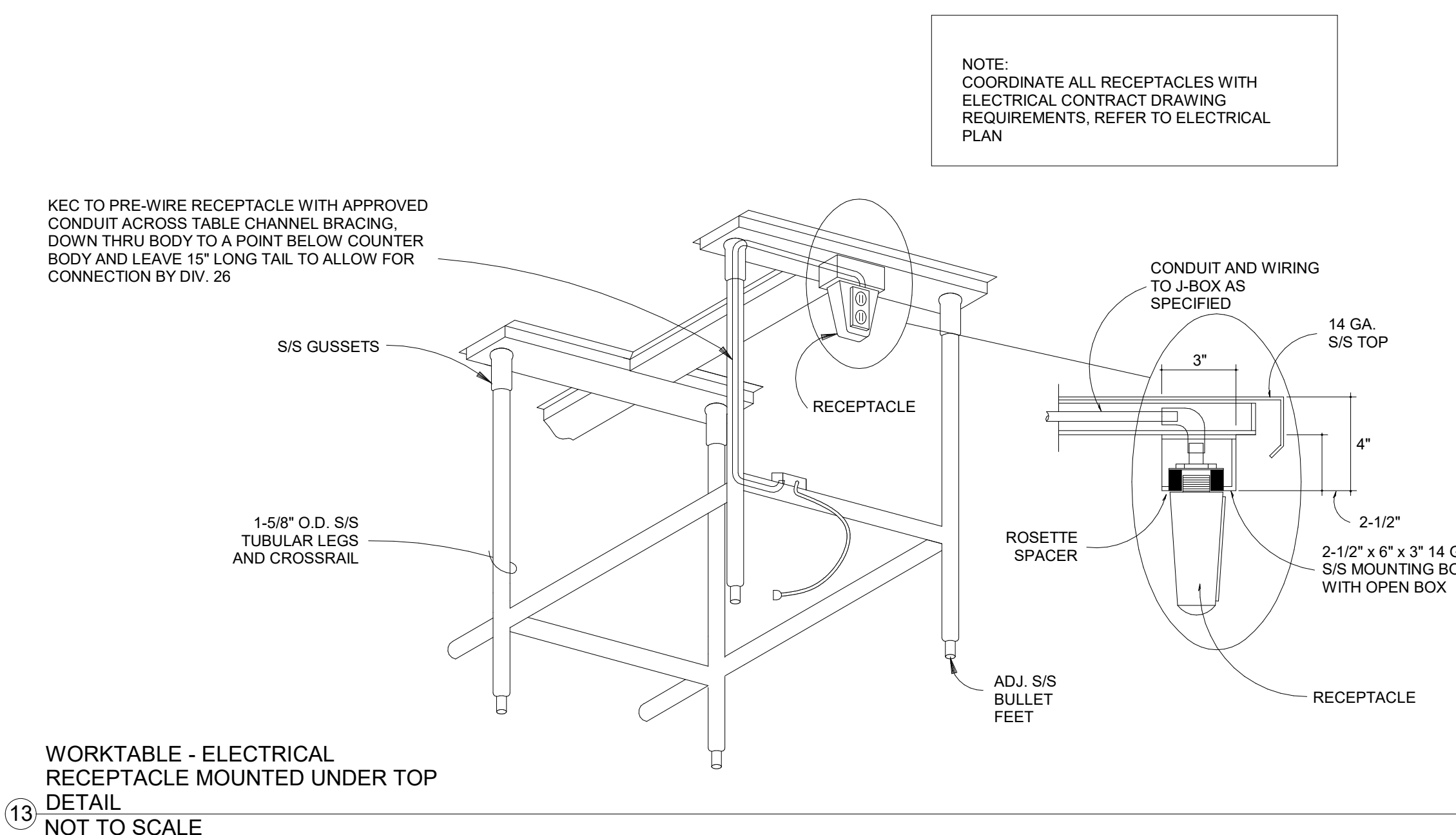
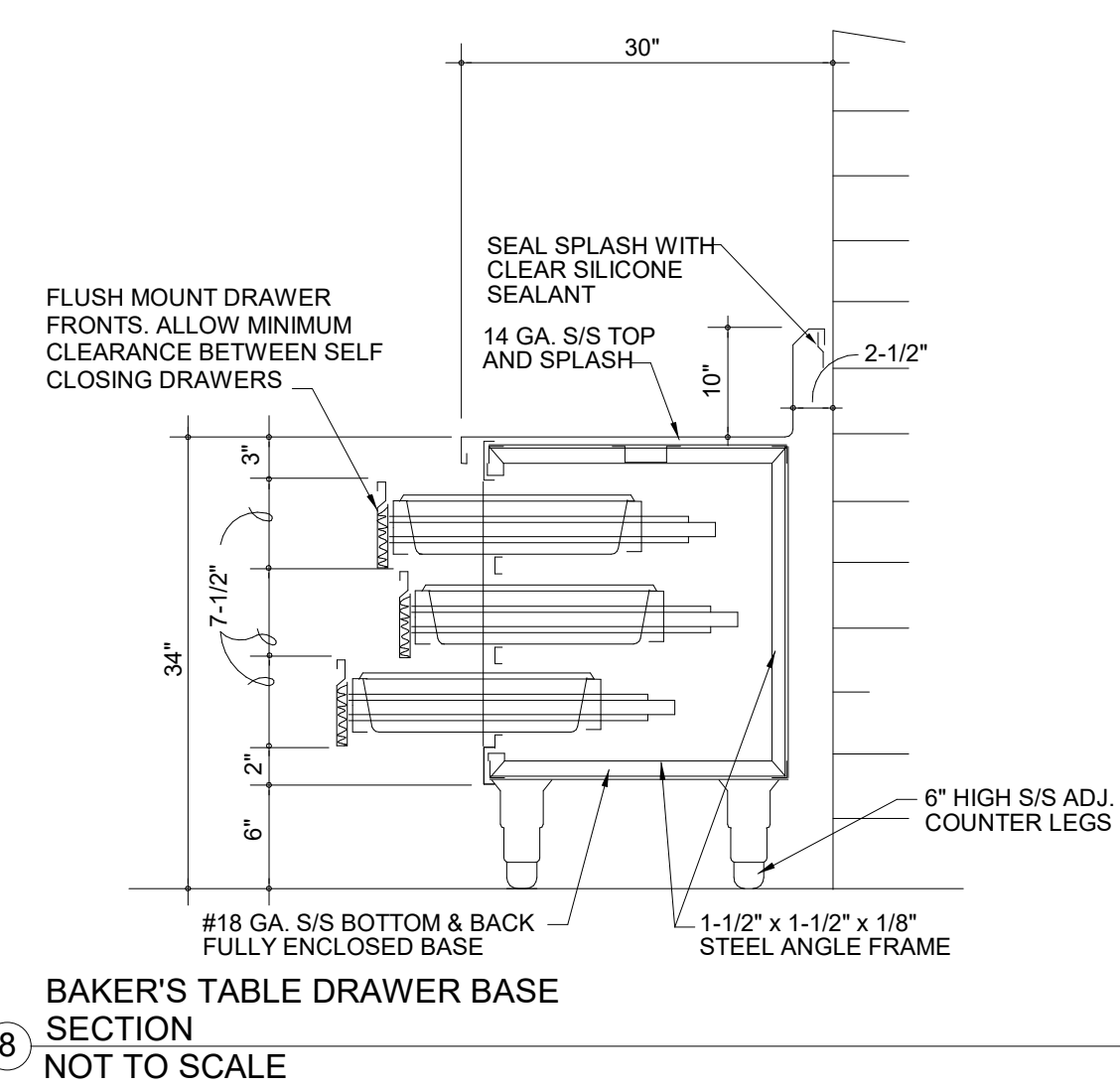
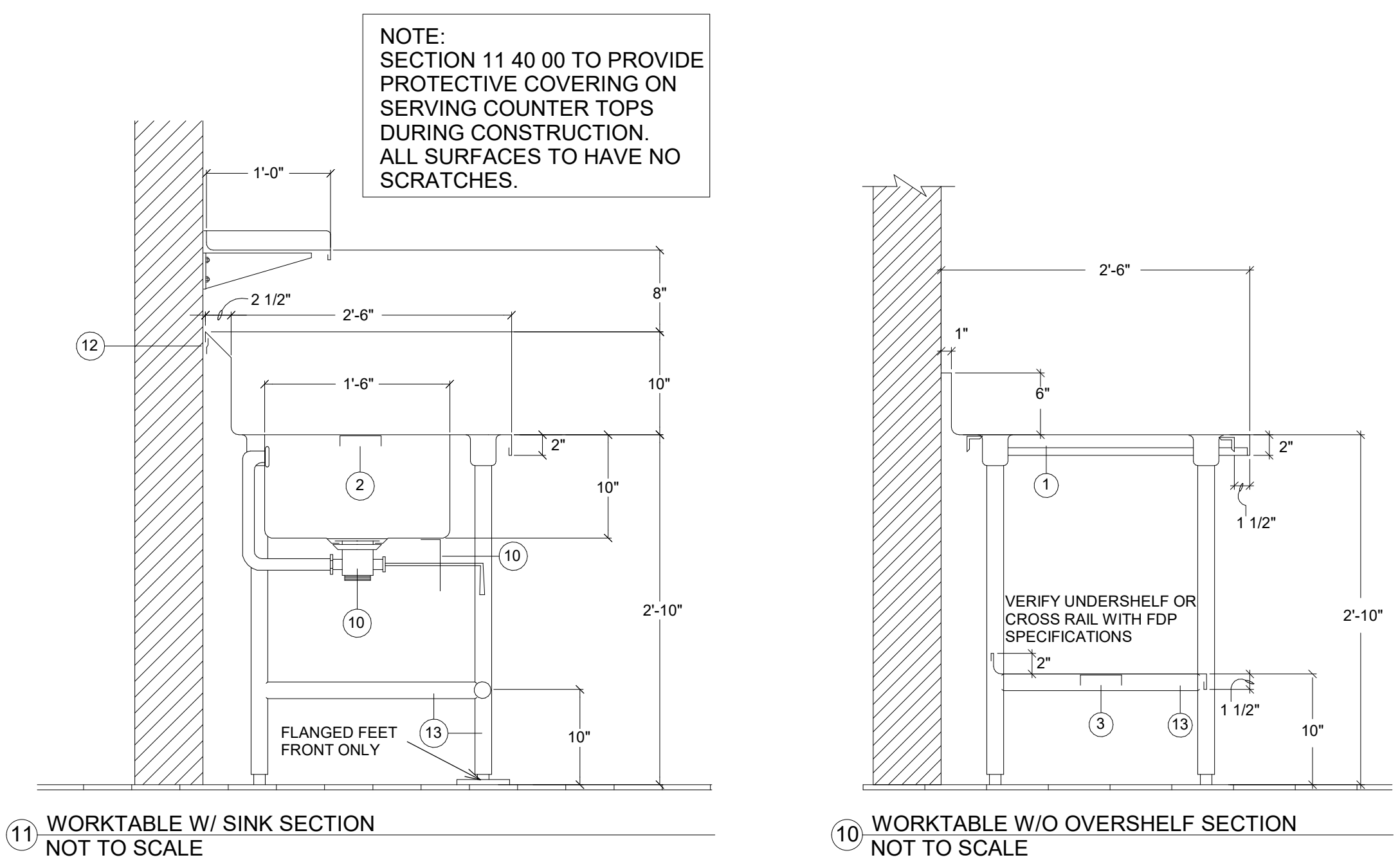
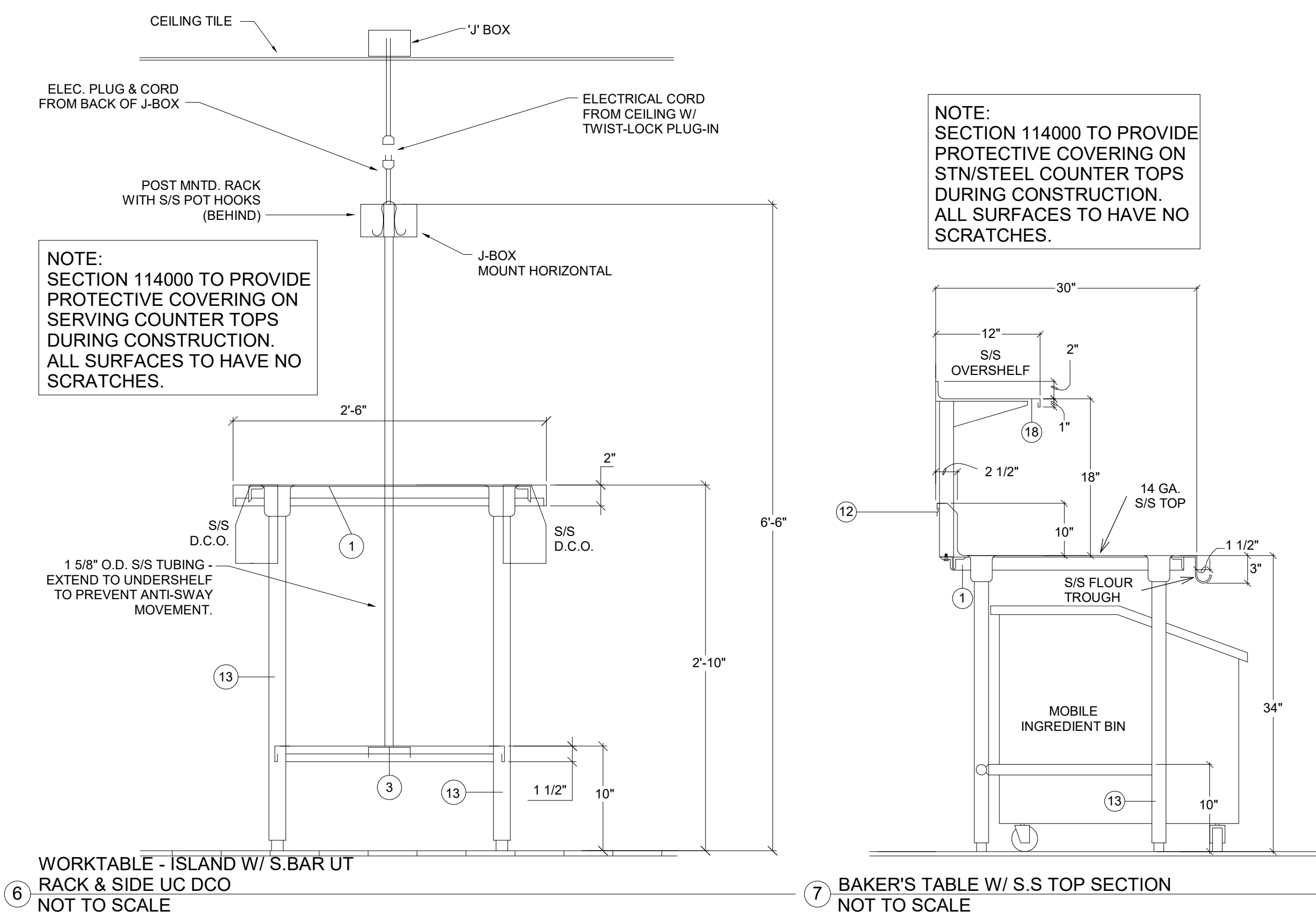
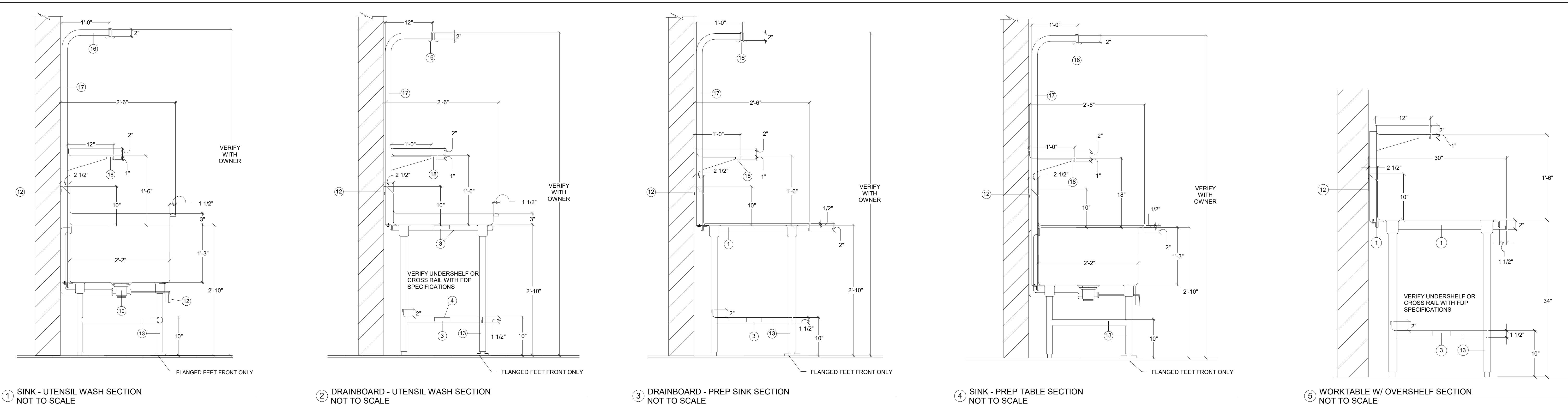
③ ELECTRICAL SYMBOLS
NOT TO SCALE

- 2 ELECTRICAL GENERAL NOTES
NOT TO SCALE





<div>APPROVAL STATUS</div> <div>THIS DRAWING REPRESENTS OUR UNDERSTANDING OF THE SPECIFICATIONS. PLEASE REVIEW IT CAREFULLY FOR ACCURACY, CLARITY AND IN DETAIL NOTE CHANGES REQUIRED.</div> <div>MARK APPROPRIATE BOX, SIGN, AND DATE BELOW.</div> <div><div><input type="checkbox"/> APPROVED FOR FABRICATION NO CHANGES</div><div><input type="checkbox"/> APPROVED FOR FABRICATION WITH CHANGES NOTED</div><div><input type="checkbox"/> REVISE AND RE-SUBMIT DRAWING</div></div> <div>BY: _____ DATE: _____</div>	<div>NOTICE</div> <div>THIS DRAWING BEING AN INSTRUMENT OF SERVICE IS AND WILL REMAIN PROPERTY OF REFRIGERATION DESIGN TECHNOLOGIES AND CANNOT BE USED WITHOUT WRITTEN AUTHORIZATION.</div>	No.	Revision/Issue	Date	<div><div><div></div><div>RDT</div><div>REFRIGERATION DESIGN TECHNOLOGIES</div></div><div>1808 FM Road 66 / P.O. Box 622 Waxahachie, Texas (800) 738-9518 www.rdtonline.com</div></div>	Consultant:	<div>Foodservice Design Professionals The Woodlands, TX</div> <div>Dealer</div> <div>-</div> <div>-</div>	<div>Project No:</div> <div>27906</div> <div>Designed By:</div> <div>J. Beam</div> <div>Drawn By:</div> <div>J. Beam</div>	<div>Sheet</div> <div>1.1</div> <div>of sheets</div>
		0	ORIGINAL ISSUE	08-17-21					



1. 1 1/2" X 1 1/2" X 1/8" GALVANIZED ANGLE IRON.
2. 1" X 4" 14 GAUGE STAINLESS STEEL HAT CHANNEL.
3. 16 GAUGE STAINLESS STEEL C-CHANNEL.
4. 16 GAUGE STAINLESS STEEL UNDERSHELF, COVE UP REAR 2", TURN DOWN FRONT 1 1/2".
5. 1/2" CEMENT BACKERBOARD WITH TILE. FRONT BY TRADE CONTRACTOR OR COUNTER MANUFACTURER. VERIFY FINISH WITH ARCHITECTURAL DRAWINGS.
6. COLD PAN - 2" RIGID INSULATION WITH 1" C.P. DRAIN - 16 GAUGE STAINLESS STEEL SECTION FALSE BOTTOM. PERFORATE FALSE BOTTOM WITH 1/4" DIA. HOLES AT 3" O.C.
7. 18 GAUGE STAINLESS STEEL INSULATED DOUBLE PAN DOOR WITH RECESSED PULL.
8. MANIFOLD DRAINS AT HOT FOOD UNITS WITH 1" TYPE 'K' COPPER AND EXTEND TO VALVE IN PLUMBING COMPARTMENT
9. FINISHED TRUE AND LEVEL MASONRY BASE BY DIVISION 09. CLOSE COUNTER BODY AT BASE AND SEAL BY SECTION 11 40 00.
10. FISHER #22314 DRAIN WITH TAILPIECE AND OVERFLOW.
11. 14 GAUGE STAINLESS STEEL BRACKET WITH DRAIN HANDLE BUSHING.
12. 16 GAUGE STAINLESS STEEL 'Z' CLIP TO WALL AND SEAL.
13. 1 5/8" DIA. 16 GAUGE STAINLESS STEEL LEGS AND CROSS RAILS.
14. 1/2" S/S TUBING DRAIN LINE - STRAP TO SHELF AND WALL - EXTEND DOWN TO TOP OF SPLASH.
15. 1 5/8" DIA. 16 GAUGE STAINLESS STEEL TUBING - SUPPORT FRONT OF SHELF WITH 1/2" ALL-THREAD INSIDE TUBING EXTENDING TO STRUCTURE ABOVE.
16. 1/4" S/S BAR STOCK WELDED TO TOP OF EACH POST - POT HOOKS TO BE COMPONENT HARDWARE #J77-4401 SPACED 8" O.C.
17. 1 5/8" 16 GAUGE STAINLESS STEEL TUBING - BOLT TO ANGLE IRON AND EXTEND UP THRU SPLASH TO 7'-0" A.F.F.
18. OVERSHELF - 16 GAUGE STAINLESS STEEL COVE UP REAR 2", TURN FRONT AND ENDS DOWN 1". ENDS TO BE CAPPED WITH EASED CORNERS WHERE ADJACENT TO WALL / FIXTURE.
19. 18 GAUGE STAINLESS STEEL LOUVERED PANEL.
20. 18 GAUGE STAINLESS STEEL LOUVERED DOUBLE PAN DOOR WITH RECESSED PULL.
21. NUMBER NOT USED.
22. 18 GAUGE STAINLESS STEEL INSULATED DOUBLE PAN SLIDING DOOR WITH COMPONENT HARDWARE COMPONENTS
A. #B57 - (VERIFY LENGTH) EXTRUDED ALUMINUM TRACK.
B. #B58-5511 & #B58-5521 FRONT & REAR DOOR SHEAVES.
C. #B62-1093 DOOR GUIDE.
D. #B60-1086 DOOR STOPS WHERE NEEDED.
E. #P62-1010 RECESS PULLS.



PKB

PKB Architects, Inc.
HOUSTON
11 Greenway Plaza, 22nd Floor
Houston, TX 77046
713-965-0808 P
713-961-4571 F
TX Firm BR 1608

ARCHITECT

HOUSTON
11 Greenway Plaza, 22nd Floor
Houston, TX 77046
713-965-0808 P
713-961-4571 F
TX Firm BR 1608

OWNER

HOUSTON
11 Greenway Plaza, 22nd Floor
Houston, TX 77046
713-965-0808 P
713-961-4571 F
TX Firm BR 1608

DESIGNER

HOUSTON
11 Greenway Plaza, 22nd Floor
Houston, TX 77046
713-965-0808 P
713-961-4571 F
TX Firm BR 1608

ENGINEER

HOUSTON
11 Greenway Plaza, 22nd Floor
Houston, TX 77046
713-965-0808 P
713-961-4571 F
TX Firm BR 1608

LEADER

HOUSTON
11 Greenway Plaza, 22nd Floor
Houston, TX 77046
713-965-0808 P
713-961-4571 F
TX Firm BR 1608

FOODSERVICE DESIGN PROFESSIONALS

HOUSTON
11 Greenway Plaza, 22nd Floor
Houston, TX 77046
713-965-0808 P
713-961-4571 F
TX Firm BR 1608

TOMBALL WEST ELEMENTARY SCHOOL

JURGEN RD
TOMBALL, TX

ISSUE FOR PROPOSAL

TOMBALL

INDEPENDENT SCHOOL DISTRICT

C B D

E A

H G F

KEY PLAN

NORTH: PLAN TRUE

DISCIPLINE

CLIENT

TOMBALL ISD

DATE 02/27/2023

PROJECT NUMBER 220137

DRAWING HISTORY

Table with 3 columns: No., Description, Date

ISSUE FOR PROPOSAL

BUILDING NUMBER

FS SECTIONS & DETAILS

K1.11

